

## ARTWORK GUIDELINES FOR IML FOIL

Printing is done by flexographic printing on transparent foil. May be used for printing vector graphics and photos.

### TECHNICAL PARAMETERS:

Raster image resolution – min. 300 dpi. If the resolution of the images is less than 300dpi, we can not guarantee a good printing quality.

Colour scheme – CMYK or PANTONE

Cut form dimensions – 0,5 l: 237 × 174 mm

– 0,3 l: 202 × 146 mm

– 0,4 l: 216 × 162 mm

– 0,25 l: 184 × 136 mm

For technological reasons, it is necessary to leave the printed area marked on the right side of the print, where the gauge is pressed for 0.5 or 0.3 l.

**Minimal text size** must be 6pt for positive texts and 7pt for negative texts. Small texts may contain only 2 colours for a good printing register. Convert text to curves before exporting!

**Minimal line thickness** must be 0,57 pt (0,2mm).

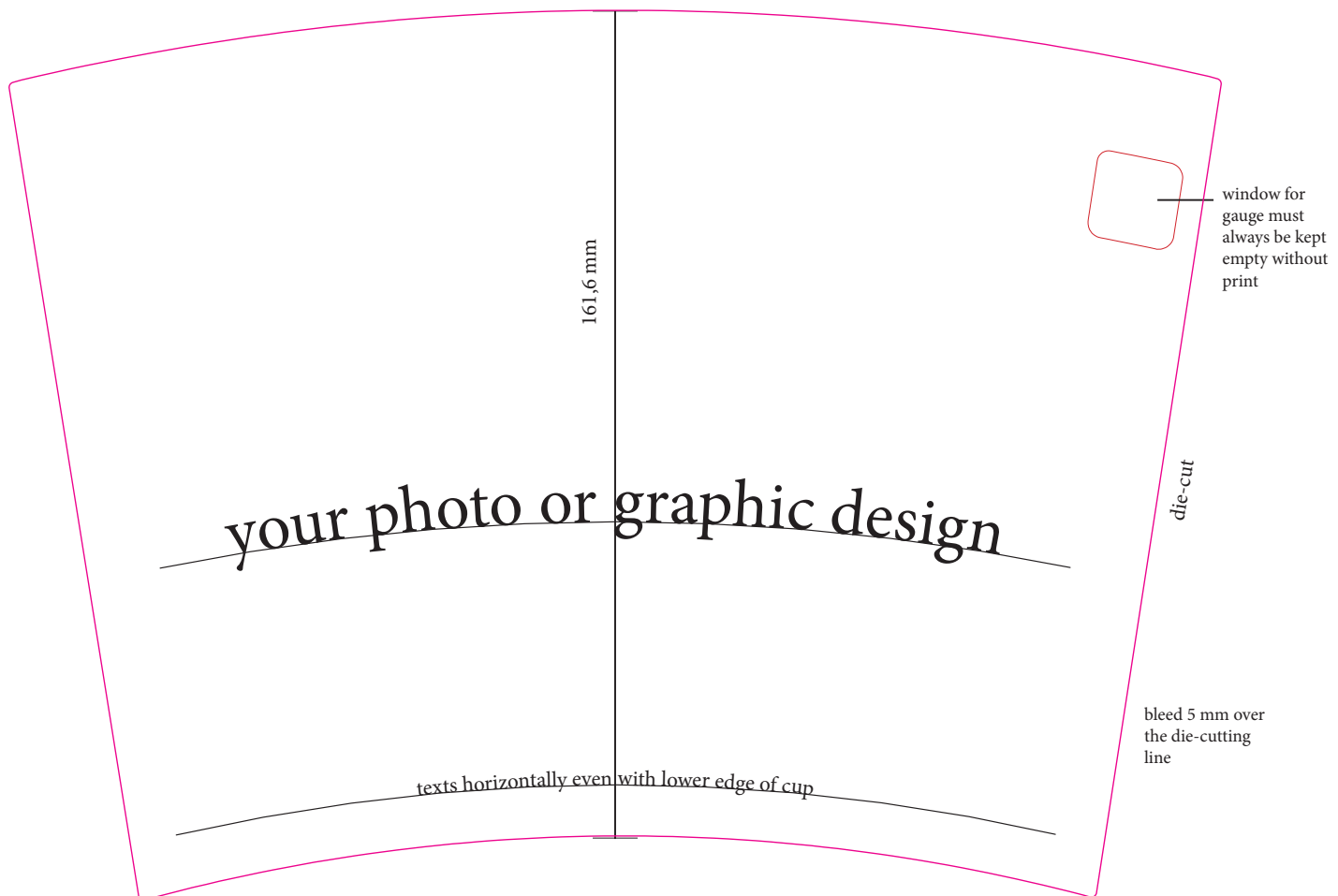
### NOTE:

Lines and texts that should be horizontal with the bottom or top of the cup must copy the curve of the top / bottom edge of the cup.

The lines that should vertical must be perpendicular to the tangent of the lower or upper edge of the cut.

For a check, we recommend making a model: print the final design, cut it out and curl into the final shape of the cup.

237 × 174 mm, CMYK, 300 dpi



**TEMPLATE PREVIEW:** (not in 1:1 – please use the attached InDesign template, place your graphics into the Graphics layer.)

**PRINT DATA:** Deliver as high resolution PDF according to the ISO standard. **TEXTS IN CURVES.**

You may also send the zipped InDesign or Illustrator file – incl. linked files and used fonts or texts in curves. (In such a case, please save as idml or ai, eps version CS5). If you are not sure, please turn to us, we will be happy to assist you with the preparation.

### WHITE BACKGROUND:

For a perfect and distinctive colour result we use white background for the artwork.

The background must be **0.3 mm smaller** than the graphic itself so that the white colour is not visible at the edges of the print.

Place the white background into the same template in one colour (linework) and export it to a print pdf as a separate page/file.